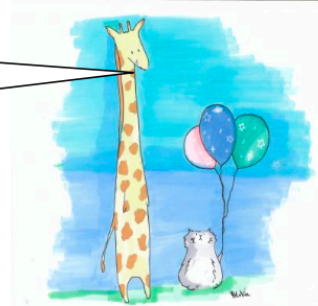


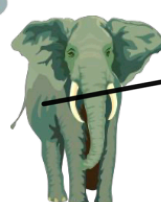







Aufgabe 1

Arbeitsauftrag:
Ordne den Bildern die passende
Gewichtsangabe zu, indem du sie
verbindest.



| | |
|---|---------|
|  | 2 g |
|  | 4 – 7 t |
|  | 150 g |
|  | 1000 kg |
|  | 270 t |
|  | 7,5 g |